

GRAND SLAM 3M3D, MARATHON 2

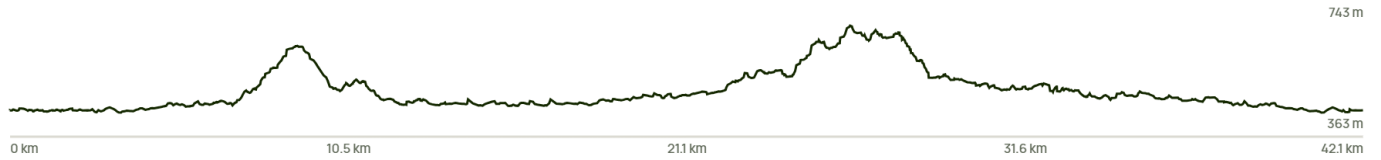
Elevation Gain 1,104 m

Distance into race (km)	Course marker	Waypoint on AllTrails map	Location
0	17	1	Start at corner of Clohesy River Road and Cedar Park Road. No water until you get to Bridle Creek Checkpoint.
4.8		2	Run out (2.4km) on Cedar Park Road. Turn around and run back (2.4km). When you get back to start line, turn left onto Clohesy River Road. Continue for 3km to the turn off onto Vivier's Track.
7.8	18	3	Turn right off Clohesy River Road and head onto the Vivier's Track. After about 500m you will cross one of the deepest sections of Clohesy River. After about 6.5km you will reach another shallow creek – the Bridle Creek checkpoint is not far from here.
14.3	19	6	Bridle Creek Checkpoint Read WARNING re road works and bush burn off on next page.
	20	7	From the checkpoint you will be directed to the right to run 3km out and 3km back along Bridle Creek Road. <i>The turnaround is on the causeway (if you reach Davis Creek Road, you've gone a few 100 metres too far).</i>
20.3	19	6	Bridle Creek Checkpoint When you arrive back at Bridle Creek checkpoint get your name ticked off , continue along Bridle Creek Road to a locked gate.
22.3		8	There is no vehicle access or tap water for the next 8km. You will climb over a few gates along this section. There are endless steep ascents and descents.
30.3	15	9	Clohesy River Road Checkpoint At the Bridle Creek Road / Clohesy River Road gate (water in a barrel available here), turn LEFT and run to the finish line. STAY on Clohesy River Road. <i>It is 9km to get back to the Vivier's Track turn that you took earlier in the day. Then 3km from there to the finish line.</i>
42.2	17	1	Finish at the corner of Clohesy River Road and Cedar Park Road.

2024 3M3D Marathon 2

AllTrails Map: <https://www.alltrails.com/explore/map/2024-3m3d-marathon-2-6c1da88?u=m&sh=vvy4ph>

Elevation Gain: 1,104 m

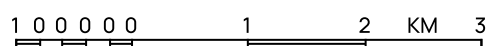
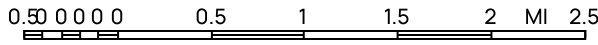
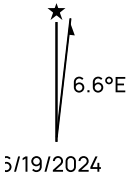
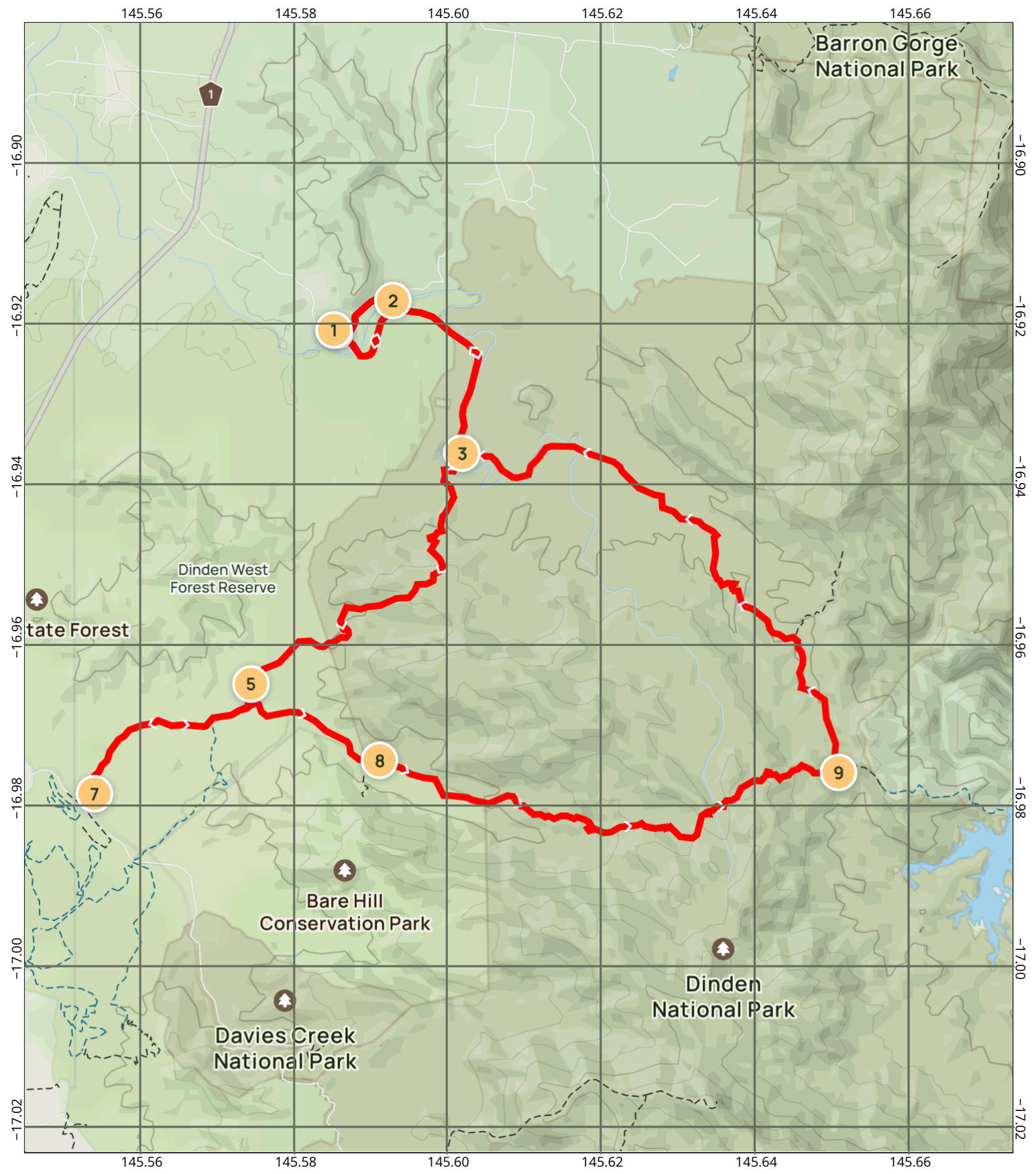


Wash-out on Bridle Creek Road. Photograph by Chrissy Warman

WARNING: BRIDLE CREEK ROAD

Be aware that there is a wash out along Bridle Creek Road. It is booked to get fixed in the week leading into the event, and as you can see by the photograph, there may be some heavy machinery in the area.

The rangers are also doing some burning off along Bridle Creek Road, but that will be finished before the event. There may be some burning off taking place at Bare Hill close to race weekend, so be aware that there may be smoke in the area.



Scale 1: 70320 Datum WGS84

Gain: 1104 m Loss: 1104 m



2024 3M3D Marathon 2
Koah, QLD

